

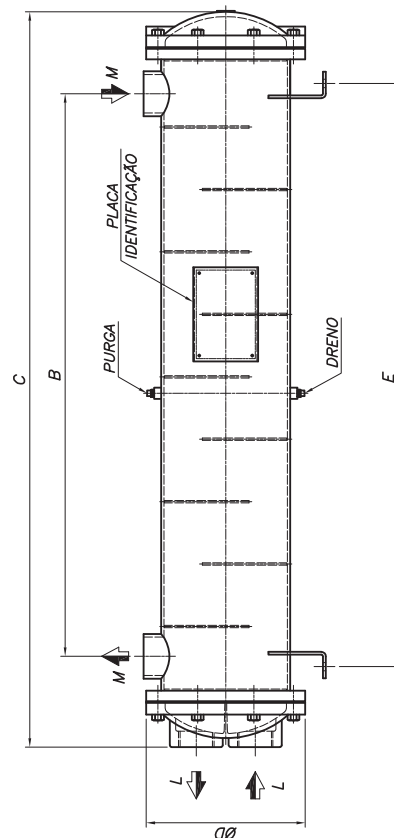
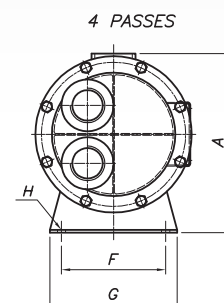


Imagem ilustrativa

Trocadores de Calor - TSEV

Utilizados em processos industriais onde se deseja aquecer ou resfriar um fluido. Podem ser desenvolvidos conforme a necessidade e aplicação do cliente.

Modelo	Área rad. m ²	Medidas em mm								Conexão Rosca BSP		Peso Vazio em Kg
		A	B	C	ØD	E	F	G	H	ØL	ØM	
TSEV-355-3-X-Y	0,21	140	190	355	125	230	60	90	Ø10,5	Ø3/4"	Ø3/4"	~13
TSEV-500-3-X-Y	0,31	140	335	500	125	375	60	90	Ø10,5	2 Passes		~14
TSEV-750-3-X-Y	0,49	140	585	750	125	625	60	90	Ø10,5	Ø1/2"		~18
TSEV-1000-3-X-Y	0,67	140	835	1000	125	875	60	90	Ø10,5	4 Passes		~21
TSEV-400-4-X-Y	0,40	190	187	400	160	210	70	110	Ø10,5	Ø1"	Ø1"	~22
TSEV-500-4-X-Y	0,54	190	287	500	160	310	70	110	Ø10,5	2 Passes		~24
TSEV-600-4-X-Y	0,67	190	387	600	160	410	70	110	Ø10,5	Ø3/4"		~26
TSEV-750-4-X-Y	0,87	190	537	750	160	560	70	110	Ø10,5	4 Passes		~29
TSEV-1000-4-X-Y	1,20	190	787	1000	160	810	70	110	Ø10,5	Ø10,5	Ø1.1/2"	~36
TSEV-500-5-X-Y	0,87	225	264	500	190	300	100	140	Ø10,5	2 Passes		~34
TSEV-600-5-X-Y	1,08	225	364	600	190	400	100	140	Ø10,5	Ø1.1/2"		~36
TSEV-750-5-X-Y	1,41	225	514	750	190	550	100	140	Ø10,5	2 Passes		~41
TSEV-1000-5-X-Y	1,95	225	764	1000	190	800	100	140	Ø10,5	Ø1.1/4"	Ø1.1/2"	~50
TSEV-1250-5-X-Y	2,49	225	1014	1250	190	1050	100	140	Ø10,5	4 Passes		~58
TSEV-1500-5-X-Y	3,02	225	1264	1500	190	1300	100	140	Ø10,5	Ø10,5		~66
TSEV-1750-5-X-Y	3,56	225	1514	1750	190	1550	100	140	Ø10,5	4 Passes		~73
TSEV-600-6-X-Y	1,51	245	334	600	210	390	125	165	Ø10,5	Ø2"	Ø2"	~45
TSEV-750-6-X-Y	1,98	245	484	750	210	540	125	165	Ø10,5	2 Passes		~51
TSEV-1000-6-X-Y	2,76	245	734	1000	210	790	125	165	Ø10,5	Ø1.1/2"		~62
TSEV-1250-6-X-Y	3,53	245	984	1250	210	1040	125	165	Ø10,5	4 Passes		~73
TSEV-1500-6-X-Y	4,31	245	1234	1500	210	1290	125	165	Ø10,5	Ø10,5	Ø2"	~83
TSEV-1750-6-X-Y	5,10	245	1484	1750	210	1540	125	165	Ø10,5	4 Passes		~94
TSEV-2000-6-X-Y	5,87	245	1734	2000	210	1790	125	165	Ø10,5	Ø10,5		~104
TSEV-750-8-X-Y	3,90	310	455	750	270	490	180	220	Ø14,0	Ø2"		Ø2"
TSEV-1000-8-X-Y	5,48	310	705	1000	270	740	180	220	Ø14,0	2 Passes	~108	
TSEV-1250-8-X-Y	7,00	310	955	1250	270	990	180	220	Ø14,0	Ø2"	~127	
TSEV-1500-8-X-Y	8,65	310	1205	1500	270	1240	180	220	Ø14,0	Ø2"	~146	
TSEV-1750-8-X-Y	10,24	310	1455	1750	270	1490	180	220	Ø14,0	4 Passes	Ø2"	~165
TSEV-2000-8-X-Y	11,79	310	1705	2000	270	1740	180	220	Ø14,0	Ø2"		~185
TSEV-750-10-X-Y	5,76	375	390	750	330	460	230	270	Ø14,0	Ø3"		~136
TSEV-1000-10-X-Y	8,24	375	640	1000	330	710	230	270	Ø14,0	2 Passes		~165
TSEV-1250-10-X-Y	10,72	375	890	1250	330	960	230	270	Ø14,0	Ø3"	Ø3"	~191
TSEV-1500-10-X-Y	13,21	375	1140	1500	330	1210	230	270	Ø14,0	Ø2"		~217
TSEV-1750-10-X-Y	15,70	375	1390	1750	330	1460	230	270	Ø14,0	4 Passes		~246
TSEV-2000-10-X-Y	18,18	375	1640	2000	330	1710	230	270	Ø14,0	Ø14,0		~273



TSEV - 2000 - 6" - Diâmetro do corpo em polegadas
 Comprimento do trocador em mm
 Identificação quanto ao tipo de fabricação

X - Número de passes (1), (2), (4)
 Y - Feixe tubular (F) Fixo
 (R) Removível